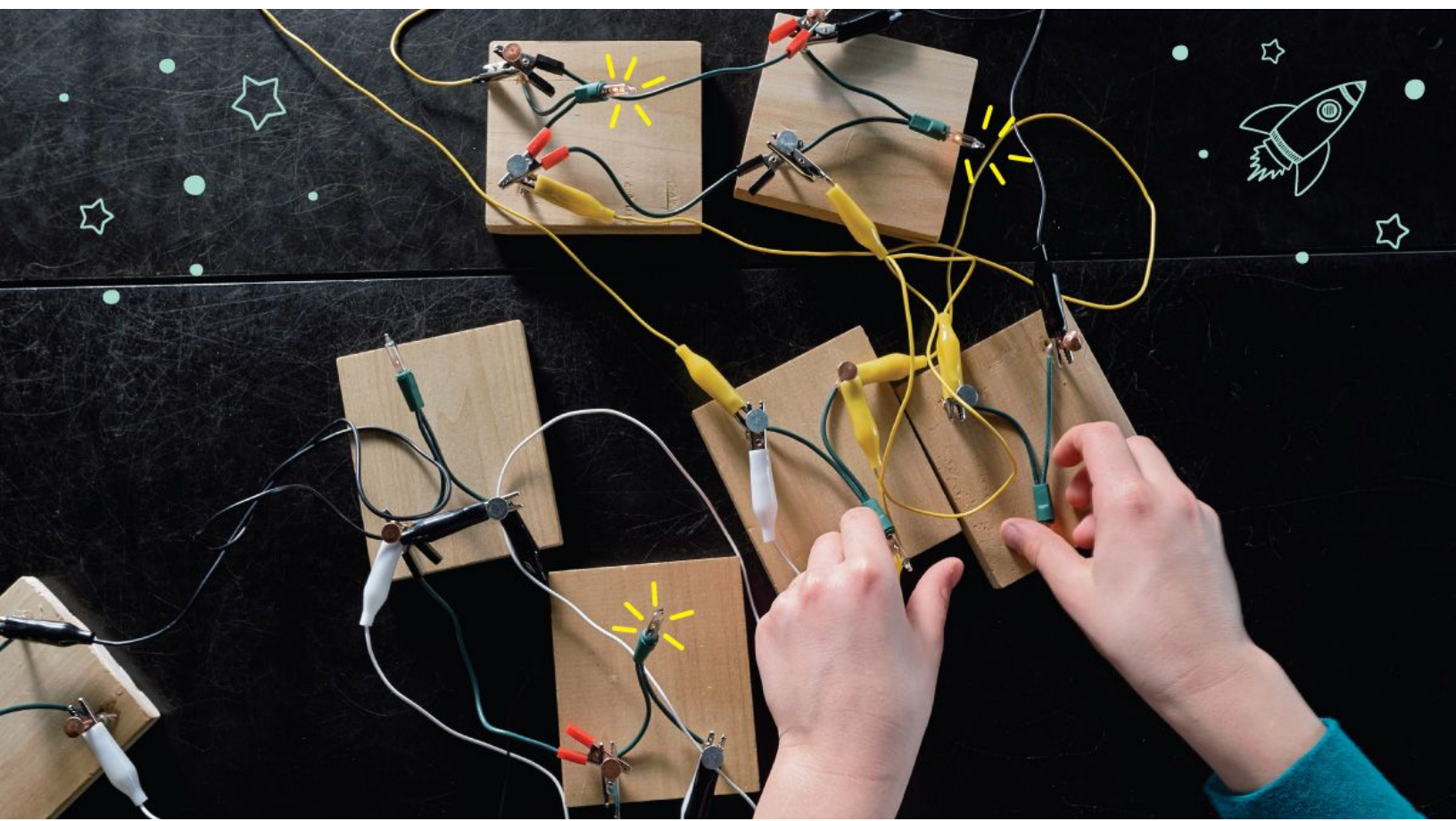




eCHOcamps

Family Handbook

ECHO inspires and engages families in the joy of scientific discovery, wonder of nature, and care of Lake Champlain.



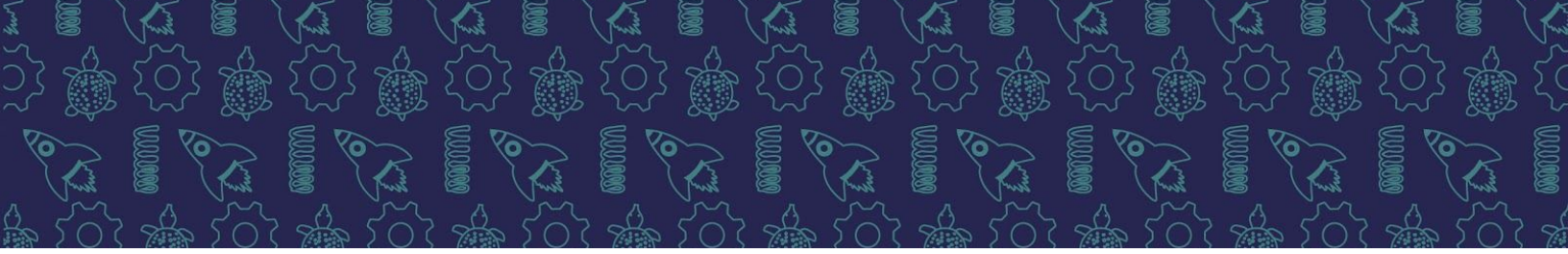


Table of Contents

Getting to ECHO.....2

Daily Schedule.....2

 Arrival and Check-in.....3

 Pick Up Procedure.....5

What to Bring.....6

Policies and Procedures.....7

 Behavioral Pathways.....7

 Illness Policy.....8

Other.....9

Contacting Staff.....10



Driving Directions

ECHO is located at 1 College Street in Burlington, Vermont. From Interstate 89 in either direction, take Exit 14 West toward Burlington. Route 2 becomes Main Street in downtown Burlington. With Lake Champlain in view, take a right onto Battery Street. Drive one block to the light and take a left onto College Street.

Daily Schedule (May Vary)

| | |
|----------------------|---------------------------|
| 8:30-9 am | Drop-Off/Free Choice |
| 9-10 am | Morning Meeting and Snack |
| 10-11 am | [Activity 1] |
| 11 am-12 pm | Outdoor Explore |
| 12-12:45 pm | Lunch and Free Choice |
| 12:45-1:30 pm | Explore ECHO |
| 1:30-2:30 pm | [Activity 2] |
| 2:30-3 pm | Closing Circle |
| 3-3:15 pm | Pick-up |
| 3:15-5 pm | After Care |

Activities may include anything from a waterfront rock walk to a crazy chemistry challenge — for more information on specific activities that might happen during the week, contact camps@echovermont.org.

Daily Schedule Details

Entering an unfamiliar environment with new faces can be an anxiety-inducing experience for kids. We invite families to help make the transition easier by talking about what to expect. The morning of the first day will be spent orienting campers and getting to know one another. We will continue to build upon this social foundation through daily morning meetings, group games, and small group projects.

Arrival and Check-In

Camp drop-off begins at 8:30 am. Because ECHO doesn't open to the general public until 10 am, the front doors will be locked. Please come around to the back/west side of the building and enter through the glass doors facing the lake. Follow the cones to the Community Room, where camp staff will welcome you!



Free Choice

Free choice is an unstructured block of time for students to explore their interests and engage with other kids. Choices will vary each day but a typical morning might include coloring pages, board games, crafts, and manipulatives.

Morning Meeting

Each day will begin with a morning meeting. Campers will greet one another, participate in circle games, and review the day's schedule. Morning Meeting sets the tone for the day and is a deliberate space in which we build our camp community.

Snack

We will provide a morning snack each day. **All food will be nut-free and vegetarian.** If your child has additional dietary needs, please communicate those needs with camp staff (camps@echovermont.org) prior to the first day of camp or provide your child with an appropriate alternative.

Group Activities

Group activities form the thematic content of each camp. Activities will primarily take place on site. If there is a field trip scheduled during the week, we'll communicate this to you in advance and remind you on Monday morning.



Outdoor Explore

Outdoor Explore gives campers the opportunity to play outside, run around, and burn off some energy. Outside explores typically takes place either at the playground at Perkins Pier or at Waterfront Park (across the street from ECHO).

Pick-Up

- Pick-up is from 3:00 pm-3:15 pm.
- The ECHO parking lot is a pay-to-park lot and only short term unpaid parking for camper pick-up is allowed.
 - Please note: ECHO's lot can become congested during the summer season.
- On fair weather days, the camp will meet families for pick-up at Hoehl Park and Sculpture Garden, the green space adjacent to our parking lot.
- On foul weather days, the campers will meet the families for pick-up under the blue awning adjacent to the drop-off doors.
- Unless you are picking up early, please do not come to the camp room to find your child — we'll be busy getting ready for your arrival!
- Please make sure that your child is signed out before leaving for the evening.
We will check IDs against the list of approved chaperones provided during the registration process.

After Care

After Care is available from 3:15 pm until 5:00 pm for \$12/day. **You can sign up and pay online using the After Care link on our website.**



Things to Bring

Sunscreen
Any medications
A nut-free lunch
Comfortable clothes
Gym shoes

Things to Leave at Home

Electronic devices
Anything valuable
Toys (these often get mixed in with
ECHO's)
Food that contains nuts



In Rocket Camp, we explore some crazy chemistry and talk about what it takes to launch a rocket. Kids should be prepared to be outside and to get messy!



Every day, we spend time exploring alongside ECHO guests. We'll meet ECHO educators and animal care staff and get to ask lots of questions.

Policies and Procedures

Inclusion Policy

We seek to meet the needs of all of our campers, regardless of race, ethnicity, gender, or ability. We also recognize that you are the expert on your child. Please reach out to us at camps@echovermont.org to let us know how we can best support your child.

Behavioral Pathways

We believe that children succeed best in a supportive, predictable environment. ECHO seeks to foster this environment in the following ways:

- By articulating clear and reasonable expectations
- By modeling positive behavior
- By reinforcing expected behaviors
- By redirecting misbehavior
- By listening to children and supporting them in solving their own problems
- By presenting choices
- By enforcing logical consequences
- By employing therapeutic breaks

Dismissal from Camp

If a camper is consistently behaving inappropriately, staff will communicate with guardians to make an action plan to address the behaviors. In order to maintain a safe environment for all campers, certain behaviors cannot be tolerated and will result in immediate dismissal from camp. These include but are not limited to bullying or harassment, violence, threats of harm to self or others, and repeated disruptive behaviors.



Illness/Absences

If your child will be absent for any reason, please contact us at 802-899-0465. In case of illness, please use the following guidelines to determine if your child is well enough to attend.

Do not send your child to camp with any of the following symptoms:

- Conjunctivitis/Pink Eye
- Diarrhea
- Chicken Pox
- Head Lice
- Bad, Persistent Cough
- Heavy Nasal Discharge
- Fever Over 100°F
- Vomiting



Children who have been out with the following illness should return to camp using the following guidelines:

- Cold/Fever: 24 hours after the fever is gone
- Conjunctivitis: properly dated medication has been administered for 25 hours
- Chicken Pox: when the last sore is scabbed over and there is no oozing
- Head Lice: after prescription treatment and all eggs are removed
- Impetigo: 48 hours after medication has begun
- Measles: 5 days after swelling starts and a note from a physician
- Scabies: 24 hours after treatment has begun
- Strep throat: 24 hours after medication has begun (4 doses)
- Vomiting: 24 hours after stopped, able to tolerate food



Field Trips

ECHO's Summer Camps may include one or more off-site field trips. Camp Staff will let you know about any off-site trips before camp begins.

Fire Evacuation Procedure

In the event of a fire, the fire alarm will sound, white annunciator lights will blink, and the fire department will automatically be notified. The group will exit to Waterfront Park (North of ECHO) and await further instructions from the Fire Department.

First Aid/Medications

ECHO Camp staff are trained in pediatric First Aid and CPR. Staff will administer First Aid as needed and will write an incident report for any injuries requiring care. If a child is in need of emergency medical care, we will attempt to contact a parent/guardian in order to give you the opportunity to take your child to a physician. If we cannot contact a parent/guardian or any of their emergency contacts, or your child needs immediate attention, we will call 911.

Parents/Guardians must have signed the medication dispensation waiver for staff to dispense medication to their child. Any prescription medications must be clearly labeled in original packaging and include the prescribing physician's contact information.

Mandatory Reporting

ECHO Camp staff members are mandatory reporters and will make reports to Child Protective Services in any cases of suspected child abuse and/or neglect. If families suspect ECHO of child abuse and/or neglect, they should report their suspicions to the Family Services Division of the Department for Children and Families at 1.800.649.5285.

Communicating with Staff

We believe that active communication between camp staff and families is important for creating the best possible camp experience for your child. We invite you to use the periods of time scheduled for drop off and pick up to check in and share information with staff. The Camp Director is also happy to meet with families outside of regular camp hours.

During the day, the lead camp counselor can be reached at 802.899.0465.

This phone is for emergencies and for communication about your child who is currently in camp only. For non-emergencies, for registration questions, or for general information, please email us at camps@echovermont.org or call Caroline Frigon at 802.864.1848 Ext. 134.

We can't wait to see you!
Please don't hesitate to reach out with any questions that arise.

